

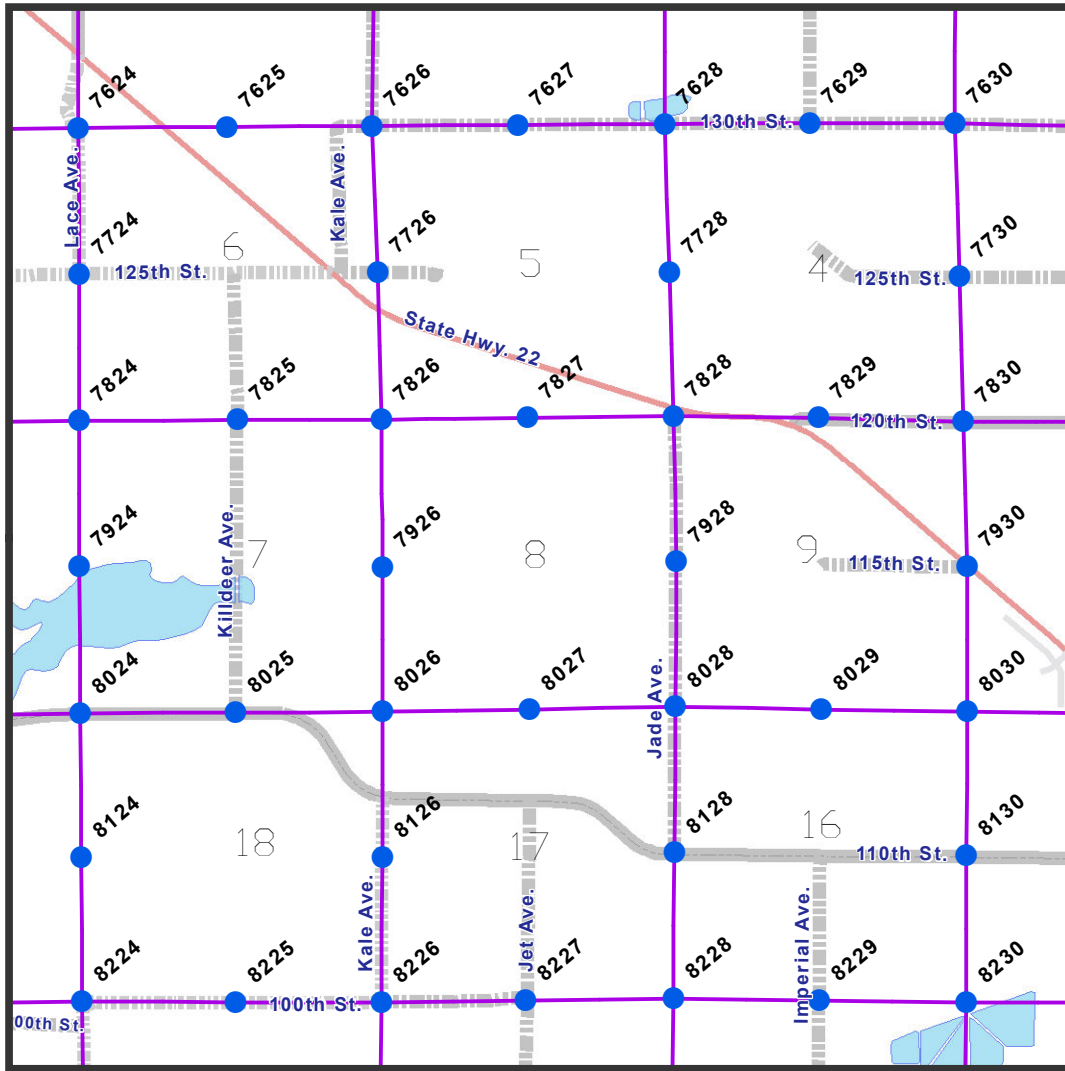
| POINT | NORTH | EAST | DESC | POINT | NORTH | EAST | DESC |
|-------|------------|------------|--------------|-------|------------|------------|--------------|
| 7630 | 227568.303 | 614359.451 | NE 4-115-28 | 7934 | 219368.559 | 625076.130 | E 11-115-28 |
| 7631 | 227528.580 | 617014.201 | N 3-115-28 | 7936 | 219503.287 | 630340.098 | E 12-115-28 |
| 7632 | 227514.687 | 619668.476 | NE 3-115-28 | 8030 | 216862.335 | 614591.187 | NE 16-115-28 |
| 7633 | 227552.657 | 622310.005 | N 2-115-28 | 8031 | 216844.068 | 617219.194 | N 15-115-28 |
| 7634 | 227578.799 | 624952.587 | NE 2-115-28 | 8032 | 216834.652 | 619860.410 | NE 15-115-28 |
| 7635 | 227553.918 | 627596.434 | N 1-115-28 | 8033 | 216787.353 | 622495.138 | N 14-115-28 |
| 7636 | 227525.105 | 630239.161 | NE 1-115-28 | 8034 | 216737.354 | 625088.960 | NE 14-115-28 |
| 7730 | 224777.006 | 614455.516 | E 4-115-28 | 8035 | 216791.300 | 627748.860 | N 13-115-28 |
| 7732 | 224753.209 | 619727.891 | E 3-115-28 | 8036 | 216844.619 | 630353.220 | NE 13-115-28 |
| 7734 | 224640.125 | 625034.573 | E 2-115-28 | 8130 | 214246.052 | 614576.930 | E 16-115-28 |
| 7736 | 224864.359 | 630277.249 | E 1-115-28 | 8132 | 214197.668 | 619856.024 | E 15-115-28 |
| 7830 | 222139.704 | 614525.331 | NE 9-115-28 | 8134 | 214086.420 | 625140.856 | E 14-115-28 |
| 7831 | 222143.992 | 617173.321 | N 10-115-28 | 8136 | 214189.299 | 630387.433 | E 13-115-28 |
| 7832 | 222110.671 | 619785.257 | NE 10-115-28 | 8230 | 211587.802 | 614560.978 | NE 21-115-28 |
| 7833 | 222057.007 | 622429.759 | N 11-115-28 | 8231 | 211571.309 | 617197.559 | N 22-115-28 |
| 7834 | 222000.017 | 625065.129 | NE 11-115-28 | 8232 | 211563.702 | 619840.211 | NE 22-115-28 |
| 7835 | 222080.705 | 627743.537 | N 12-115-28 | 8233 | 211555.952 | 622491.032 | N 23-115-28 |
| 7836 | 222161.548 | 630318.249 | NE 12-115-28 | 8234 | 211482.531 | 625144.065 | NE 23-115-28 |
| 7930 | 219513.132 | 614586.283 | E 9-115-28 | 8235 | 211496.377 | 627780.932 | N 24-115-28 |
| 7932 | 219483.102 | 619825.565 | E 10-115-28 | 8236 | 211527.649 | 630420.091 | NE 24-115-28 |



11-1-2011

McLEOD COUNTY, SECTION DATA
GLENCOE TOWNSHIP, Northeast Quarter
 Sections 1,2,3,10,11,12,13,14,15 Township 115 North -- Range 28 West

Orientation of this bearing system is the McLeod County Coordinate NAD 1983 (1996 Adjustment)



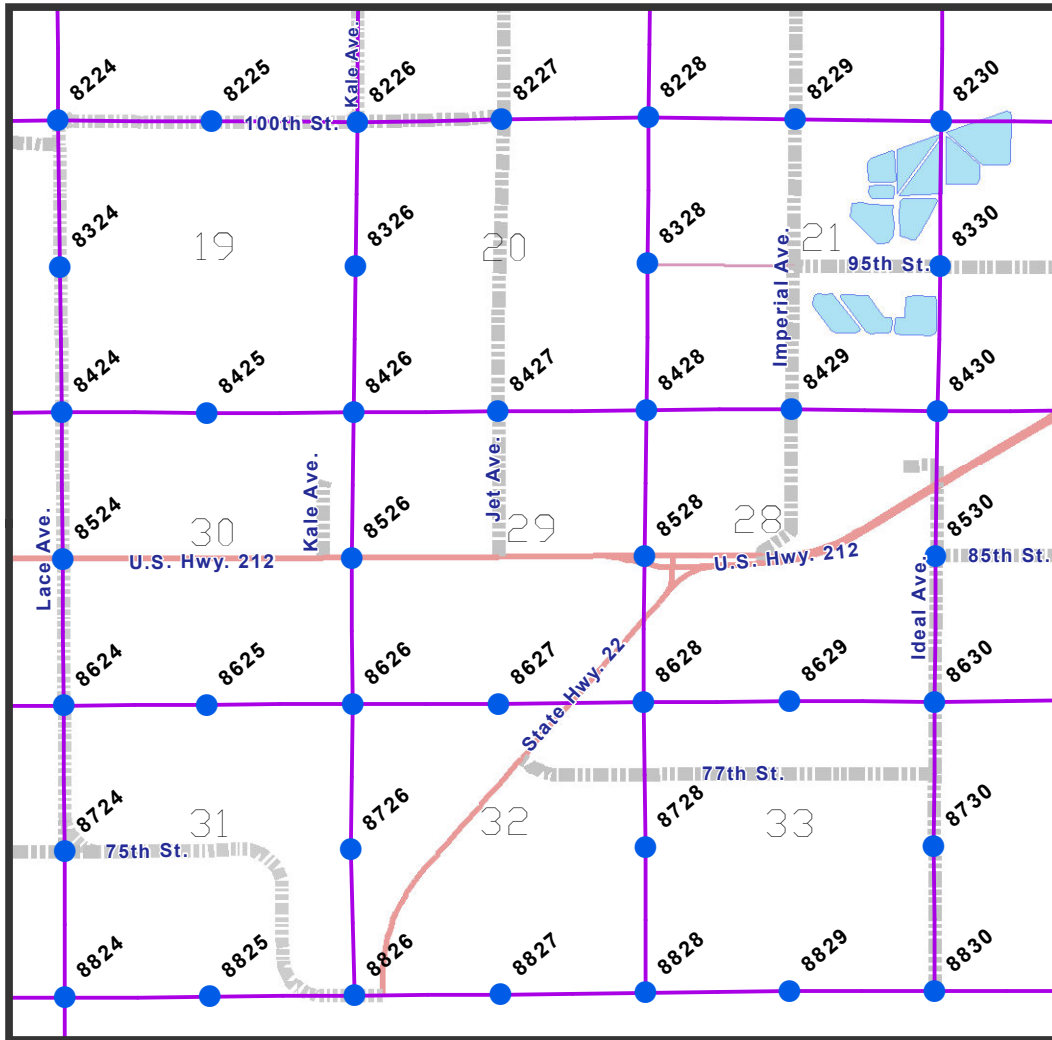
| POINT | NORTH | EAST | DESC | POINT | NORTH | EAST | DESC |
|-------|------------|------------|--------------|-------|------------|------------|--------------|
| 7624 | 227489.263 | 598413.741 | NE 1-115-29 | 7928 | 219602.216 | 609296.231 | E 8-115-28 |
| 7625 | 227505.018 | 601115.609 | N 6-115-28 | 7930 | 219513.132 | 614586.283 | E 9-115-28 |
| 7626 | 227525.769 | 603765.100 | NE 6-115-28 | 8024 | 216838.322 | 598452.395 | NE 13-115-29 |
| 7627 | 227542.754 | 606409.617 | N 5-115-28 | 8025 | 216851.367 | 601286.781 | N 18-115-28 |
| 7628 | 227562.544 | 609085.876 | NE 5-115-28 | 8026 | 216864.401 | 603959.426 | NE 18-115-28 |
| 7629 | 227577.593 | 611722.679 | N 4-115-28 | 8027 | 216909.963 | 606620.791 | N 17-115-28 |
| 7630 | 227568.303 | 614359.451 | NE 4-115-28 | 8028 | 216957.396 | 609282.141 | NE 17-115-28 |
| 7724 | 224830.270 | 598442.635 | E 1-115-29 | 8029 | 216909.925 | 611936.947 | N 16-115-28 |
| 7726 | 224868.461 | 603861.689 | E 6-115-28 | 8030 | 216862.335 | 614591.187 | NE 16-115-28 |
| 7728 | 224859.706 | 609167.273 | E 5-115-28 | 8124 | 214216.565 | 598472.940 | E 13-115-29 |
| 7730 | 224777.006 | 614455.516 | E 4-115-28 | 8126 | 214217.738 | 603946.272 | E 18-115-28 |
| 7824 | 222155.848 | 598433.330 | NE 12-115-29 | 8128 | 214305.469 | 609267.115 | E 17-115-28 |
| 7825 | 222172.952 | 601323.572 | N 7-115-28 | 8130 | 214246.052 | 614576.930 | E 16-115-28 |
| 7826 | 222181.987 | 603934.004 | NE 7-115-28 | 8224 | 211595.024 | 598493.806 | NE 24-115-29 |
| 7827 | 222213.063 | 606584.193 | N 8-115-28 | 8225 | 211581.752 | 601278.331 | N 19-115-28 |
| 7828 | 222244.444 | 609249.224 | NE 8-115-28 | 8226 | 211571.573 | 603935.281 | NE 19-115-28 |
| 7829 | 222217.072 | 611879.546 | N 9-115-28 | 8227 | 211609.894 | 606562.115 | N 20-115-28 |
| 7830 | 222139.704 | 614525.331 | NE 9-115-28 | 8228 | 211649.977 | 609235.510 | NE 20-115-28 |
| 7924 | 219504.437 | 598438.188 | E 12-115-29 | 8229 | 211613.578 | 611897.623 | N 21-115-28 |
| 7926 | 219495.482 | 603951.362 | E 7-115-28 | 8230 | 211587.802 | 614560.978 | NE 21-115-28 |



11-1-2011

McLEOD COUNTY, SECTION DATA
GLENCOE TOWNSHIP, Northwest Quarter
 Sections 4,5,6,7,8,9,16,17,18 Township 115 North -- Range 28 West

Orientation of this bearing system is the McLeod County Coordinate NAD 1983 (1996 Adjustment)



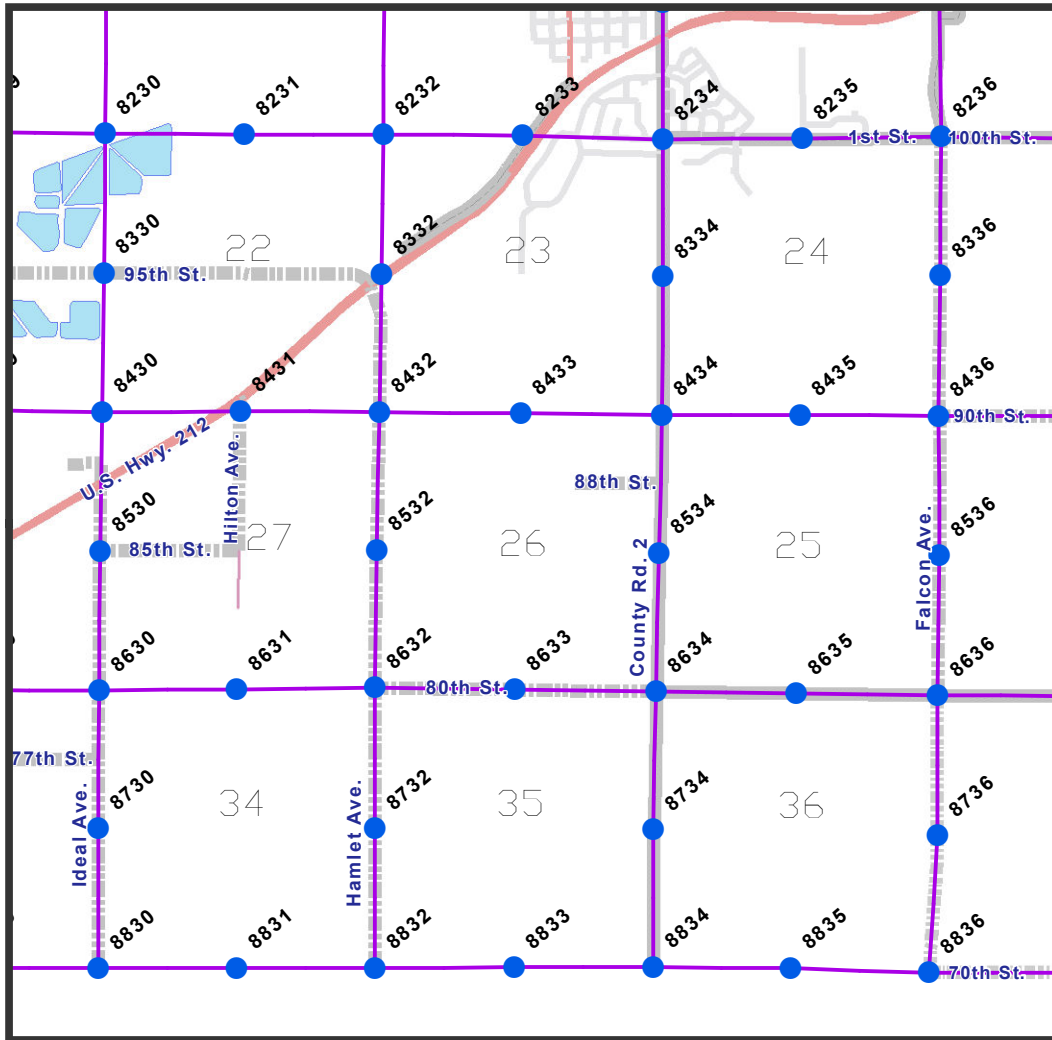
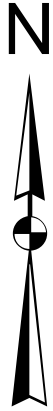
| POINT | NORTH | EAST | DESC | POINT | NORTH | EAST | DESC |
|-------|------------|------------|--------------|-------|------------|------------|--------------|
| 8224 | 211595.024 | 598493.806 | NE 24-115-29 | 8528 | 203678.544 | 609153.861 | E 29-115-28 |
| 8225 | 211581.752 | 601278.331 | N 19-115-28 | 8530 | 203665.795 | 614458.727 | E 28-115-28 |
| 8226 | 211571.573 | 603935.281 | NE 19-115-28 | 8624 | 200951.135 | 598585.205 | NE 36-115-29 |
| 8227 | 211609.894 | 606562.115 | N 20-115-28 | 8625 | 200967.206 | 601188.934 | N 31-115-28 |
| 8228 | 211649.977 | 609235.510 | NE 20-115-28 | 8626 | 200979.100 | 603846.755 | NE 31-115-28 |
| 8229 | 211613.578 | 611897.623 | N 21-115-28 | 8627 | 200985.869 | 606507.103 | N 32-115-28 |
| 8230 | 211587.802 | 614560.978 | NE 21-115-28 | 8628 | 201009.655 | 609149.282 | NE 32-115-28 |
| 8324 | 208929.866 | 598528.767 | E 24-115-29 | 8629 | 201031.258 | 611795.687 | N 33-115-28 |
| 8326 | 208938.715 | 603901.372 | E 19-115-28 | 8630 | 201019.820 | 614442.158 | NE 33-115-28 |
| 8328 | 208994.714 | 609219.940 | E 20-115-28 | 8724 | 198288.802 | 598606.108 | E 36-115-29 |
| 8330 | 208944.806 | 614537.893 | E 21-115-28 | 8726 | 198332.847 | 603817.040 | E 31-115-28 |
| 8424 | 206292.565 | 598555.540 | NE 25-115-29 | 8728 | 198371.078 | 609174.748 | E 32-115-28 |
| 8425 | 206278.151 | 601196.426 | N 30-115-28 | 8730 | 198397.706 | 614424.310 | E 33-115-28 |
| 8426 | 206281.778 | 603858.808 | NE 30-115-28 | 8824 | 195629.991 | 598615.173 | NE 1-114-29 |
| 8427 | 206302.021 | 606483.714 | N 29-115-28 | 8825 | 195656.070 | 601247.190 | S 31-115-28 |
| 8428 | 206326.830 | 609195.764 | NE 29-115-28 | 8826 | 195674.920 | 603891.130 | SE 31-115-28 |
| 8429 | 206349.394 | 611835.168 | N 28-115-28 | 8827 | 195689.380 | 606531.530 | S 32-115-28 |
| 8430 | 206301.148 | 614496.644 | NE 28-115-28 | 8828 | 195712.980 | 609182.410 | S 32-115-28 |
| 8524 | 203619.954 | 598565.480 | E 25-115-29 | 8829 | 195755.470 | 611792.030 | S 33-115-28 |
| 8526 | 203629.299 | 603828.491 | E 30-115-28 | 8830 | 195748.880 | 614435.460 | SE 33-115-28 |



11-1-2011

McLEOD COUNTY, SECTION DATA
GLENCOE TOWNSHIP, Southwest Quarter
 Sections 19,20,21,28,29,30,31,32,33 Township 115 North -- Range 28 West

Orientation of this bearing system is the McLeod County Coordinate NAD 1983 (1996 Adjustment)



| POINT | NORTH | EAST | DESC | POINT | NORTH | EAST | DESC |
|-------|------------|------------|--------------|-------|------------|------------|--------------|
| 8230 | 211587.802 | 614560.978 | NE 21-115-28 | 8534 | 203623.095 | 625073.048 | E 26-115-28 |
| 8231 | 211571.309 | 617197.559 | N 22-115-28 | 8536 | 203579.341 | 630383.867 | E 25-115-28 |
| 8232 | 211563.702 | 619840.211 | NE 22-115-28 | 8630 | 201019.820 | 614442.158 | NE 33-115-28 |
| 8233 | 211555.952 | 622491.032 | N 23-115-28 | 8631 | 201041.902 | 617056.447 | N 34-115-28 |
| 8234 | 211482.531 | 625144.065 | NE 23-115-28 | 8632 | 201070.922 | 619676.726 | NE 34-115-28 |
| 8235 | 211496.377 | 627780.932 | N 24-115-28 | 8633 | 201036.393 | 622342.687 | N 35-115-28 |
| 8236 | 211527.649 | 630420.091 | NE 24-115-28 | 8634 | 200996.608 | 625007.632 | NE 35-115-28 |
| 8330 | 208944.806 | 614537.893 | E 21-115-28 | 8635 | 200960.239 | 627677.402 | N 36-115-28 |
| 8332 | 208933.931 | 619800.807 | E 22-115-28 | 8636 | 200922.878 | 630361.050 | NE 36-115-28 |
| 8334 | 208864.460 | 625148.933 | E 23-115-28 | 8730 | 198397.706 | 614424.310 | E 33-115-28 |
| 8336 | 208881.926 | 630398.904 | E 24-115-28 | 8732 | 198393.318 | 619670.685 | E 34-115-28 |
| 8430 | 206301.148 | 614496.644 | NE 28-115-28 | 8734 | 198381.950 | 624963.087 | E 35-115-28 |
| 8431 | 206320.805 | 617122.632 | N 27-115-28 | 8736 | 198272.827 | 630353.680 | E 36-115-28 |
| 8432 | 206304.215 | 619761.552 | NE 27-115-28 | 8830 | 195748.880 | 614435.460 | SE 33-115-28 |
| 8433 | 206275.724 | 622447.200 | N 26-115-28 | 8831 | 195752.150 | 617054.300 | S 34-115-28 |
| 8434 | 206246.708 | 625130.296 | NE 26-115-28 | 8832 | 195755.430 | 619673.140 | SE 34-115-28 |
| 8435 | 206245.803 | 627746.773 | N 25-115-28 | 8833 | 195762.780 | 622311.410 | S 35-115-28 |
| 8436 | 206235.934 | 630376.627 | NE 25-115-28 | 8834 | 195769.670 | 624951.660 | SE 35-115-28 |
| 8530 | 203665.795 | 614458.727 | E 28-115-28 | 8835 | 195749.000 | 627563.300 | S 36-115-28 |
| 8532 | 203679.434 | 619715.961 | E 27-115-28 | 8836 | 195661.280 | 630194.660 | SE 36-115-28 |



11-1-2011

McLEOD COUNTY, SECTION DATA
GLENCOE TOWNSHIP, Southeast Quarter
 Sections 22,23,24,25,26,27,34,35,36 Township 115 North -- Range 28 West

Orientation of this bearing system is the McLeod County Coordinate NAD 1983 (1996 Adjustment)